



# **CONNECTICUT STATE REFEREE PROGRAM**

## **Referee Instructions and League Information**

### **for Adult Soccer in Connecticut**



**Revised November 9, 2018**

- **ALL GOALS MUST BE ANCHORED** - do not let a game kick without the home team fulfilling this mandatory obligation!!!
- **All REFEREES MUST ARRIVE AT GAMES A MINIMUM OF 30 MINUTES BEFORE THE KICKOFF!!!**
- **ABSOLUTELY NO USE OF THE TWO MAN REFEREE SYSTEM IN CT LEAGUES!!!**
- **ALL LEAGUES WILL PAY AT THE FIELD BEFORE THE START OF PLAY** (exceptions will be noted in the League information that follows)
- **All Players must have a valid pass --- NO PASS – NO PLAY --- Exceptions will be communicated by the League Representative or the Adult Assignor(s) Only!!! All Teams must have a Lineup/Roster for their matches!!!**
- **The entire Referee Crew is REQUIRED to “REPORT” ALL ADULT MATCHES they officiate within 24 hrs of the game. For CSL and the entire SASL the Referee Crew must “REPORT” the game by 8:00 pm on day of the game. Logon to your account, select “View Accepted Games + Add” to Report your matches. In the supplementary area AR’s are expected to provide the following information:**
  - 1. Score, Home vs Away ( + jersey number of goal scorers for certain leagues)**
  - 2. Cards given to players of either team (record name, player pass number and team)**
  - 3. Fees paid**
  - 4. Behavior of teams**
  - 5. Unusual occurrences, i.e. missing officials, injuries, game cancelled**
  - 6. For any assault on any match official - ALL MUST FILE A REPORT!!!**
- **The Referee must send a copy of each team’s lineup to the appropriate League Representative** (see following pages for League Representative contact info and exceptions)
- **All PLAYER PASSES will be sent to the listed League Representatives when a RED CARD is given in a game**
- **Supplementary Referee Reports** – use the “General Comments” area for the “Supplementary Referee Report” to document Send Offs, Injuries and any other unusual circumstances – the entire Referee Crew (Referee and AR’s) must provide specific details about the player ejection, injury or game termination
- **Do not send anything to the CSSA Discipline Committee, they will review Game Reports on-line!!!**

- **To ensure the safety of all participants, only players and managers are allowed in the Technical Area. All spectators and other individuals must be asked to go to the opposite side of the field from the Team Benches and Technical Area.**

## **Rain Policy:**

**All assigned Referees MUST go to their field assignments for that particular date unless you receive some form of communication from the Referee Assignor(s) or the League Representative (NOT Team Managers) that the game has been canceled. Upon arrival at the field the Referee will determine if the match is playable. If the match is unplayable the entire crew is ONLY entitled to ½ the Referee game fee. Referees not following the above rain policy will be considered as a MISSED ASSIGNMENT and will be put in bad standing. NOTE: If the town or owner/operator closes a field there will be no game. The team representative must notify one of the Assignor(s) or the League Representative in order that they notify the Referee crew. Teams/Leagues making game changes/cancellations without notifying the Assignors will be assessed a full fee for the Referee crew.**

**Check the league that you are scheduled to officiate; some have a phone hotline or web page for weather related cancellations.**

---

**Referee Game Assignments and Referee Assessments for most competitions will be scheduled on the web through:**



**<http://csrp.ctreferee.net>**

# CSSA "Point of Emphasis"

The Connecticut State Soccer Association requests (CSSA) that a Laws Of The Game "Point of Emphasis" be observed by all adult match-assigned Referees prior to the start of competitive men's adult league matches (men's Open, U-23, O-30, O-40 to O-50 leagues and divisions), and co-ed leagues.

This is a request derived from a CSSA Special Committee on Referee Abuse that recently met. The Committee recommended that the following LOTG be emphasized beginning this spring:

## **LAW 12 - FOULS AND MISCONDUCT - Sending-off offences**

### **Specifically:**

### **USING OFFENSIVE, INSULTING OR ABUSIVE LANGUAGE AND/OR GESTURES**

CSSA requests that assigned Referees issue a Red-Card to any player who verbally abuses them, or anyone else. Too many times we are getting reports of only a yellow-card (or no card at all) being issued when a Referee is verbally abused; while the LOTG require a Red Card.

Dan Rooney  
CSSA President

# Leagues:

<b>ASLC – Amateur Soccer League of Connecticut (<a href="http://www.asl-ct.com">www.asl-ct.com</a>)</b>			
Fees: <b>One Referee \$75 --- <u>each team pays \$37.50</u></b>			
Kick Off Time:	<b>5:10 PM Kick-off in Spring/Summer</b>	<b>Earlier Kick-off for Fall games/play-offs</b>	
Grace Period:	<b>15 Min Either Team</b>	Duration of Match: <b>70 minutes</b>	Age Restrictions: <b>None</b>
Number of Players:	<b>8 per side (7 field + 1 keeper), a minimum of 6 to kick-off --- when one or both teams are reduced to less than 6 athletes, for whatever reason, the game will be canceled</b>		
Roster Size:	<b>Maximum of 15 players + 2 player coaches are allowed to be rostered for any match</b>		
Subs:	<b>FIFA – Any Stoppage In Play</b>	Number:	<b>Unlimited</b>
<b>Subs at team bench NEED to wear a different color shirt to distinguish them from players on the field</b>			
Goalkeeper:	<b>Ball can NOT cross half field line on (a) goal kick, (b) throw, or (c) punt. Ball must touch another player or field before crossing half field line. If ball crosses half field line, the opposing team is awarded an indirect free kick from center field mark.</b>		
Free Kicks:	<b>Free Kick required distance will be 6 yards</b>		
<b><u>NO SLIDING TACKLES on an Opponent</u> (first offense warning – next offense “Caution” player)</b>			
<b>No sliding tackles are allowed by field player to dispossess or challenge another player for the ball or to stop a promising Attack. Field players are permitted to slide only if there is no opposing player near the ball/play (i.e. preventing throw-in or corner-kick). A slide tackle the in penalty area or in goal scoring opportunity = automatic yellow and indirect free kick --- note: the *Goal Keeper* is permitted to slide tackle within Penalty Area only</b>			
Reporting:	<ul style="list-style-type: none"> <li>• Report on <a href="#">Central Assign</a> within 24 hours --- do not send in line-ups</li> <li>• For Red Card(s) given send pass(s) to Raphael Rezende</li> <li>• Written Record of Goal Scorers by Name is Required in Referee Report on Central Assign</li> <li>• <b>Corner Flags</b> MUST be provided by the teams; both teams are responsible – Report their absence in the Referee Report on Central Assign</li> </ul>		
<b>Playoffs Only: If tied after regulation time proceed directly to <u>Kicks from the Mark</u> to determine Winner</b>			

## ***Additional ASLC League Information:***

<ol style="list-style-type: none"> <li>1) A “<u>City of Stamford, Recreation Services Department, One Day, West Beach Sports Pass</u>” for the current year must be DISPLAYED on the car’s windshield to park in West Beach’s sports field parking areas or you will receive a parking ticket. No more parking on the street. The “parking pass” is a Word document that will be sent to each Referee crew member by the ASLC Assignor and must have the game day date updated to make it valid for each game date.</li> <li>2) Rosters/team line-ups must be printed out by the Referee crew from “DropBox.com” (rosters/allowed players can be checked at the field with the <u>DropBox</u> or <u>TeamSnap</u> smartphone apps)</li> <li>3) <u>All players must be prepared to present (2) forms of picture identification at check-in before the start of the game</u> (managers will only use the Manager Pass to check in). <ol style="list-style-type: none"> <li>a) A League Player Pass is mandatory - 2<sup>nd</sup> legal Picture ID may be requested at the discretion of the Referee team on match day for example : Government ID, Driver’s License, Passport, College ID, NO Business IDs)</li> <li>b) Keep the player pass till the end of the game and give back Legal Picture ID back to the player.</li> <li>c) Retain and send any pass to the League if any player or coach who presents you a player/manager pass that in your opinion does not look like the person presenting that pass, in the case of a player be sure to check their 2<sup>nd</sup> ID. In the case of a manager trying to be someone that they are not – just take the pass and do not let them be the manager for that game. The team will have only one Manager for this game.</li> </ol> </li> <li>4) Only <u>(2) Managers</u> (non-players) with valid Manager’s Passes ONLY and <u>Players in Uniform</u> will be allowed in the bench area, located on the inner part of both fields at West Beach. Everyone else will have to be in the stands/bleacher area outside of the gated field at all venues. <u>Team Bench/Technical Areas are on the side opposite of the bleachers. DO NOT start/continue the match until this is done to your satisfaction.</u></li> <li>5) <u>THE ONLY PLAYER EXCEPTIONS WILL BE COMMUNICATED BY THE ASLC ASSIGNOR OR THEIR DESIGNATE!!!</u></li> </ol>
---

- 6) Referee **MUST** be **PAID IN FULL** before the game starts. If the teams do not have the payment by the scheduled game time (on your watch) you go into 15 min grace period in order for the delinquent team to come up with the money; at 5:20:01 for a 5:10 pm scheduled game the game will not be played.
- 7) **No Smoking in the Team Bench/Technical Areas** and **No Alcoholic beverages allowed at any ASLC venue** – ask the person to leave the Technical Area and report it on a Supplemental Referee Report. (this is a field use/venue permit requirement)
- 8) **Team Bench Areas are on opposite side of the stands/bleachers.** All spectators will have to be in the stands/bleacher area or outside of the gated field at all venues.
- 9) **Referees Must Report Absence of Corner Flags in Referee Report and Goal Scorers must be reported by NAME and not by number in the game report on Central Assign.**

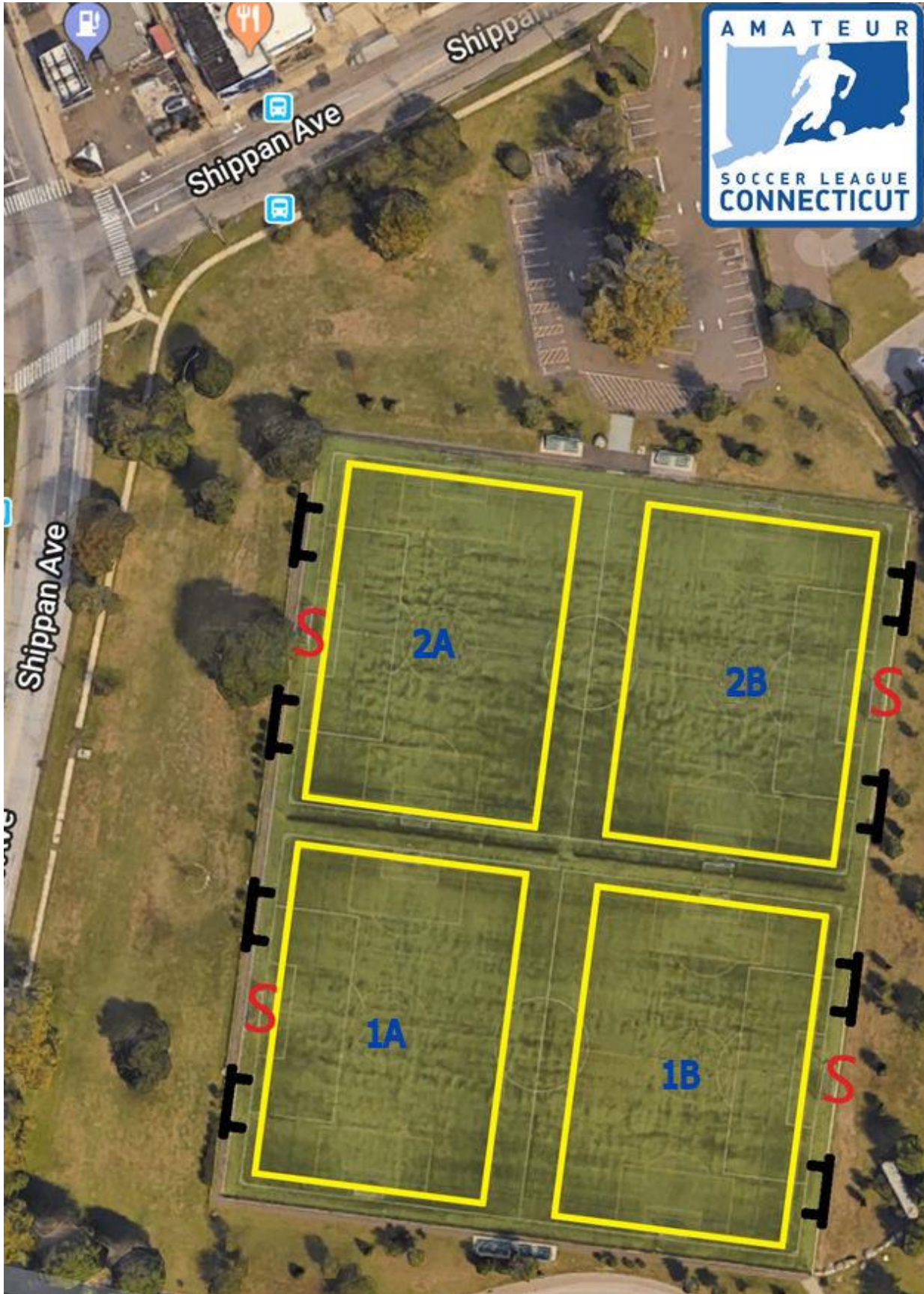
### **ASLC points of emphasis:**

- **Referee must report absence of Corner Flags in Central Assign Referee Report**
- **Substitutes must be either sitting down or wearing a different shirt than team colors**
- **A maximum of two “non-playing coaches” are permitted on the sideline (team/bench/technical area)**
- **Goal Scorers must be reported by NAME and not by number in the game report on Central Assign**
- **Rosters/game day line-ups must be printed out by the Referee crew from DropBox.com – login:  
Username: refs.aslconn@gmail.com  
Password: Refs1234 (password is case sensitive, note upper case “R”)**
- **Rosters will be ready for printing every Friday after 8:00 pm for that Saturday’s games** (rosters/allowed players can be checked at the field with the DropBox or TeamSnap smartphone apps)

### **DropBox smartphone app:**

- **Download the Dropbox Mobile Application for smartphones either from the App Store or Google play. Once installed on your smartphone use the following login:  
Username: refs.aslconn@gmail.com  
Password: Refs1234 (password is case sensitive)**
- **The Dropbox mobile app rosters are OFFICIAL and should be the same as the “game day line-up” printout from DropBox.com**
- **If a player is not listed on the Dropbox roster, they are not allowed to play regardless of whether or not a player pass is presented to the Referees at check-in.**
- **Player Suspensions - Players with their names in bold red and ‘SUSPENDED’ in the ‘Jersey Number’ column are currently serving suspensions and therefore NOT permitted to play**

**ASLC 2018 Field Layout:**



<b>CASL – Connecticut Adult Soccer League – O–40 Men (was CARSL) (<a href="http://ctsal.leaguerepublic.com/">http://ctsal.leaguerepublic.com/</a>)</b>		
Fees: <b>\$85</b>	Grace Period: <b>30 Min Either Team</b>	Duration of Match: <b>90 minutes</b>
Subs: <b>FIFA – Any Stoppage In Play</b>	Number: <b>Unlimited</b>	
Age Restrictions:	<b>All Players must be 40 or turn 40 this year (Keeper may be 35 or older)</b>	
Report Score to:	<b>Report on <a href="#">Central Assign</a> within 24 hours</b>	
	<b>Do Not Send Lineups to Representatives for this League</b>	
Keep Written Record of Goal Scorers:	<b>Required - Record All Goal Scorers in Referee Supplementary Report</b>	
<b><u>“NO SLIDING TACKLES”</u> (first offence warning – next offense “Caution” player)</b>		

<b>CSL – Connecticut Soccer League (<a href="http://www.ctsoccerleague.com">www.ctsoccerleague.com</a>)</b>		
Fees: <b>\$75/55</b>	Grace Period: <b>None</b> If both teams agree then 15 min grace. After 30 min Referee makes decision. Referees are fully paid.	Duration of Match: <b>90 minutes</b>
Subs: <b>FIFA – Any Stoppage In Play</b>	Number: <b>8 Players With Re-entry</b>	
Age Restrictions:	<b>None</b>	
Report Score to:	<b>Report on <a href="#">Central Assign</a> by 8:00 pm on Sunday or Day of Match</b>	
Keep Written Record of Goal Scorers:	<b>Required --- Record All Goal Scorers in Referee Supplementary Report (include team name, player name, jersey number and number of goals scored)</b>	
League Requirements:	<p><b>(3) BENCH PERSONNEL MAX IN THE TECHNICAL AREA</b></p> <p><b>BENCH PERSONNEL MUST HAVE A “WHITE PASS” – NO SPECTATORS!!!</b></p> <p><b>Spectators must be on the opposite side of the field from team benches!!!</b></p> <p><b>Referees must be paid no later than the half time intermission.</b></p> <p><b>Game rosters must be sent to Jack Testani by fax, e-mail, or mail and passes for sent off players must be mailed to Jack Testani within 48 hours.</b></p>	

<b>CWSSL – Connecticut Women Summer Soccer League (<a href="http://www.gmoeser.net/cwssl">www.gmoeser.net/cwssl</a>)</b>		
Fees: <b>\$85</b>	Grace Period: <b>15 Min Either Team</b>	Duration of Match: <b>90 minutes</b>
Subs: <b>FIFA – Any Stoppage In Play</b>	Number: <b>Unlimited</b>	
Age Restrictions:	<b>None</b>	
Report Score to:	<b>Report <u>ONLY</u> on <a href="#">Central Assign</a> within 24 hours --- <u>Do Not Send</u> Lineups to Representatives for this League</b>	
Keep Written Record of Goal Scorers:	<b>Not Required</b>	

<b>ECWSC – Eastern CT Women Soccer Club</b> ( <a href="http://www.soccerkicks.net">www.soccerkicks.net</a> )		
Fees: <b>\$65</b>	Grace Period: <b>15 Min Either Team</b>	Duration of Match: <b>80 minutes</b>
Subs: <b>FIFA – Any Stoppage In Play</b>	Number: <b>Unlimited</b>	
Age Restrictions: <b>All Players Must Be 25 Years Of Age or Older</b>		
Passes:	<b>All Players will use either a Driver’s License or a Valid Pass – teams can borrow 2 players from other team if they have 9 players present.</b>	
Report Score to: <b>Report within 24 hours</b>		
Keep Written Record of Goal Scorers: <b>Not Required</b>		

<b>FVASC Men – Farmington Valley Adult Soccer Club</b> ( <a href="http://www.fvasc.com">www.fvasc.com</a> )		
Fees: <b>\$65/45</b>	Grace Period: <b>15 Min Either Team</b>	Duration of Match: <b>80 minutes</b>
Subs: <b>FIFA – Any Stoppage In Play</b>	Number: <b>Unlimited</b>	
Age Restrictions as follows:		
<b>Men:</b>	<b>All Players Must Be Over 30 Years Of Age, except three U-30s allowed per roster unless otherwise approved by league.</b>	
Keep Written Record of Goal Scorers: <b>Not Required</b>		
Report Game Score to:	<b>Report within 24 hours – In order to receive payment for the assigned game, the Referee must complete voucher for all three Referees.</b> <b>For Referee Report / Payment information go to</b> <a href="http://www.fvasc.com">http://www.fvasc.com</a> “Officials Area”	
League Requirements:	<b>Rain Cancellation --- check FVASC website 2 -3 hours prior to the game</b> <a href="http://www.fvasc.com">http://www.fvasc.com</a> <b>In situations where teams do not have the minimum required players and if teams still want to play, assigned Referees should stay to work the game.</b>	

<b>NWSL – Nutmeg Women’s Soccer League O–30 Women</b>		
Fees: <b>\$70/40</b>	Grace Period: <b>30 Min Either Team</b>	Duration of Match: <b>90 minutes</b>
Subs: <b>FIFA – Any Stoppage In Play</b>	Number: <b>Unlimited</b>	
Age Restrictions: <b>All Players must be 30 or turn 30 this year</b>		
Report Score to:	<b>Report on <a href="#">Central Assign</a> within 24 hours</b> <b>Do Not Send Lineups to Representatives for this League</b>	
Keep Written Record of Goal Scorers: <b>Required - Record All Goal Scorers in Referee Supplementary Report</b>		
<b><u>“NO SLIDING TACKLES”</u></b>		



<b>NWSL – Nutmeg Women’s Soccer League O–40 Women</b>		
Fees: <b>\$60</b>	Grace Period: <b>30 Min Either Team</b>	
Number of Players: <b>8 versus 8</b>		Duration of Match: <b>80 minutes</b>
Subs: <b>FIFA – Any Stoppage In Play</b>		Number: <b>Unlimited</b>
Age Restrictions: <b>All Players must be 40 or turn 40 this year</b>		
Report Score to: <b>Report on <a href="#">Central Assign</a> within 24 hours</b> <b>Do Not Send Lineups to Representatives for this League</b>		
Keep Written Record of Goal Scorers: <b>Required - Record All Goal Scorers in Referee Supplementary Report</b>		
<b><u>“NO SLIDING TACKLES”</u></b>		

<b>SCWSL South – Southern Connecticut Women’s Soccer League (<a href="http://www.scwsl.com">www.scwsl.com</a>)</b>		
Fees: <b>\$65/40</b>	Grace Period: <b>15 Min Either Team</b>	Duration of Match: <b>90 minutes</b>
Subs: <b>FIFA – Any Stoppage In Play</b>		Number: <b>Unlimited</b>
Age Restrictions: <b>None</b>		
Report Score to: <b>Report on <a href="#">Central Assign</a> within 24 hours</b>		
Keep Written Record of Goal Scorers: <b>Not Required</b>		
In case on Inclement weather: <b>Stamford Field Closing Hotline (203) 406-4224</b> <b>Weston Field Closing Hotline (203) 834-3773</b> <b>Greenwich Field Closing Hotline (203) 618-7650</b>		

<b>SNEASL – Southern New England Association Soccer League (<a href="http://www.eteamz.com/Sneasl/">www.eteamz.com/Sneasl/</a>)</b>		
Fees: <b>\$75</b>	Grace Period: <b>15 Min Either Team</b>	Duration of Match: <b>90 minutes</b>
Subs: <b>FIFA – Any Stoppage In Play</b>		Number: <b>Unlimited</b>
<b>O–30 Age Restrictions: Three Under 30 Players May Be On The Field At One Time, Not Including Goal Keeper</b> <b>They Must Be 25 Years or Older – The Rest Of The Team Must Be 30 Years Or Older</b> <b>Goal Keeper Must Be 25 Years Or Older</b>		
<b>O–40 Age Restrictions: All Players Must Be Over 40 Years Of Age or turning 40 this half of the current season (i.e. spring or fall), Except Goal Keeper</b>		
<b>O–40 Keeper: <u>Must Be 35 Years or Older – Underage Goal Keepers are not allowed as field player</u></b>		
Report Score to: <b>Report within 24 hours</b>		
Keep Written Record of Goal Scorers: <b>Not Required</b>		

<b>SASL – Shoreline Adult Soccer League — O–30 and O–40 leagues (<a href="http://www.saslsoccer.com">www.saslsoccer.com</a>)</b>		
Fees: <b>\$85/\$55 – \$100 One Referee</b>		Duration of Match: <b>90 minutes</b>
Grace Period:	<p><b>As SASL implements more double header games, <u>GAMES MUST START ON TIME!!!</u></b></p> <p><b><u>THE GRACE PERIOD WILL BE AS FOLLOWS</u></b> (per SASL Rules and By-Laws section C5):</p> <ul style="list-style-type: none"> <li><b>BOTH teams have a ten (10) minute grace period, and MUST be ready to play within ten (10) minutes of scheduled start time.</b></li> <li><b>Ready to play is at least seven (7) players in uniform on the field, with team player passes and line up form already checked out by Referee.</b></li> <li><b>The Referee's time is considered official!!!</b></li> <li><b>If these conditions are not met, a team is under no obligation to start a game after the ten (10) minute grace period and can request the Referee to call the game, Referee MUST honor request. The offending club shall be fined, forfeit the game and pay the referee's FULL fee. If the referee reports a game is started after the ten (10) minute grace period, but before the twenty (20) minute mark, the late team(s) shall be fined (Rule L. 5 &amp; 14). Referee MUST CANCEL the game if late team is not on field ready to START play at twenty (20) minutes after scheduled start time. Game CANNOT BE STARTED and played after the twenty (20) minute mark and Referees shall be paid FULL FEE.</b></li> </ul>	
Rain Policy:	<ul style="list-style-type: none"> <li><b>Rain Cancellation Policy – 2 hours prior to game time check web link below for cancellations: <a href="http://groups.google.com/group/SASLSCHEDULE?hl=en">http://groups.google.com/group/SASLSCHEDULE?hl=en</a></b></li> </ul>	
Subs: <b>FIFA – Any stoppage in play</b>		Number: <b>Unlimited</b>
<b>O–30 Age Restrictions: All Players Must Be 30 Years or Older, except Goal Keeper</b>		
<b>O–30 Keeper: Must Be 25 Years or Older (Goal Keeper under 30 years of age will have different color pass)</b>		
<b>O–40 Age Restrictions: All Players Must Be 40 Years or Older, except Goal Keeper</b>		
<b>O–40 Keeper: Must Be 35 Years or Older (Goal Keeper under 40 years of age will have different color pass)</b>		
<b>O–50 Age Restrictions: All Players Must Be 50 Years or Older, except Goal Keeper</b>		
<b>O–50 Keeper: Must Be 45 Years or Older (Goal Keeper under 40 years of age will have different color pass)</b>		
<p><b><u>Note: Underage Goal Keepers Are Not Allowed As Field Players!!!</u></b></p> <p><b><u>Send rosters and any passes for Red Card(s) given to Andy Aldo within 48 hours after game!!!</u></b></p>		
Report Score to:	<b>Report on <a href="#">Central Assign</a> by 8:00 pm on Sunday or Day of Match</b>	
Keep Written Record of Goal Scorers:	<b>Not Required</b>	

<b>FSA Summer Leagues – U23 Men and U23 Women</b>	
Fees: <b>\$65/\$50/\$50</b>	
Grace Period: Clock must start at the time of kick off not later - there is no grace period	Duration of Match: <b>90 minutes</b>
<b>Cup Games – (2) full 5 Minute Halves + Kicks from the Mark to determine a winner</b>	
Subs: <b>FIFA – Any Stoppage In Play</b>	Number: <b>Unlimited</b>
Age Restrictions: <b>Players Must Be Under 23 Years Of Age</b>	
Keep Written Record of Goal Scorers: <b>Not Required</b>	
Special Instructions: FSA will print the team rosters and will put them in a folder on the field's benches. ONLY those players on the roster can play. Players MUST CHECK IN with Driver's License or other school photo ID. This MUST be done for each game. Update the score sheet in the folder with the game score.	

<b>FSA Summer League – High School</b>	
Fees: <b>\$65 – one man system</b>	
Grace Period: Clock must start at the time of kick off not later - there is no grace period	Duration of Match: <b>80 minutes</b>
Subs: <b>FIFA – Any Stoppage In Play</b>	Number: <b>Unlimited</b>
Age Restrictions: ???	
Keep Written Record of Goal Scorers: <b>Not Required</b>	
Special Instructions: FSA will print the team rosters and will put them in a folder on the field's benches. ONLY those players on the roster can play. Players MUST CHECK IN with Driver's License or other school photo ID. This MUST be done for each game. Update the score sheet in the folder with the game score.	

<b>Stamford Co-Ed Soccer League</b> ( <a href="http://www.stamfordcoedsoccer.com">http://www.stamfordcoedsoccer.com</a> )	
Fees: <b>\$70 – One Referee (each team pays \$35.00)</b>	
Grace Period: <b>15 Min Either Team</b>	Duration of Match: <b>80 minutes</b>
Subs: <b>FIFA – Any Stoppage In Play</b>	Number: <b>Unlimited</b>
<p><b>Minimum number of players is 7 (consistent with FIFA)</b>  <b>Maximum number of men on the field is 6 at any given time.</b>  <b>Maximum number of women on the field is 6 at any given time</b>  <b>All players must have numbers on their jersey - if not note in game report and send an email Sandra Hampson -- <a href="mailto:sandra7h@aol.com">sandra7h@aol.com</a></b></p>	
<p>Passes / Rosters: <b>No player passes will be used; teams must use an acceptable form of photo identification. Rosters will be pre-printed with no “write in” names permitted.</b>  <b>E-mail rosters to Sandra Hampson -- <a href="mailto:sandra7h@aol.com">sandra7h@aol.com</a></b></p>	
Report Score to: <b>Report on <a href="#">Central Assign</a> no later than Noon the next day</b>	
Keep Written Record of Goal Scorers: <b>Not Required</b>	
<b><u>“NO SLIDING TACKLES”</u></b>	
<p><b>No sliding tackles are permitted at any time except for the goalkeeper sliding within his / her own penalty area to make a play on the ball. Field player slide tackling MUST BE SANCTIONED WITH A YELLOW CARD for Unsporting Behavior and a notation in the Supplemental Section of the game report is required. If a foul is not committed in connection with the slide tackle, then the restart is an indirect free kick for the unsporting behavior.</b></p>	
<p><b>E-mail John Collins <a href="mailto:ctjacref@comcast.net">ctjacref@comcast.net</a> immediately after the game with any send offs/dismissals in addition to completing a game report on Central Assign</b></p>	

<b>WHWSC – West Hartford Women’s Soccer Club</b> ( <a href="http://www.whwsc.org">www.whwsc.org</a> )		
Fees: <b>\$55/30</b>	Grace Period: <b>15 Min Either Team</b>	Duration of Match: <b>80 minutes</b>
Subs: <b>FIFA – Any Stoppage In Play</b>	Number: <b>Unlimited</b>	
Age Restrictions:	<b>Players must be 21 years of age for Div A and 25 years of age for Div B</b>	
Report Game Score to:	<b>Report within 24 hours – For Referee Report / Payment information go to</b> <a href="http://westhartsoccer.net/whwsc_home.htm">http://westhartsoccer.net/whwsc_home.htm</a>	
Keep Written Record of Goal Scorers:	<b>Not Required</b>	
For Payment Info Contact:	<b>Carolyn Young casy26@gmail.com</b>	

<b>WSL - World Soccer League – Premier Division</b> ( <a href="http://www.thewsl.org">www.thewsl.org</a> )		
Fees: <b>\$70/50</b>	Duration of Match: <b>90 minutes</b>	
Grace Period:	<b>10 minutes — start game on time — games not started on time reduce the time of the halves by the delay or else forfeit game for the team that is not ready</b>	
Subs: <b>FIFA – Any Stoppage In Play</b>	Number: <b>7 subs – no reentry</b>	
Age Restrictions:	<b>none</b>	
Report Score to:	<b>Report within 24 hours</b>	
Keep Written Record of Goal Scorers:	<b>Yes, report all scorers on Central Assign</b>	

<b>WSL - World Soccer League – Over 35 Division</b> ( <a href="http://www.thewsl.org">www.thewsl.org</a> )		
Fees: <b>\$70/50</b>	Duration of Match: <b>80 minutes</b>	
Grace Period:	<b>10 minutes — start game on time — games not started on time reduce the time of the halves by the delay or else forfeit game for the team that is not ready</b>	
Subs: <b>FIFA – Any Stoppage In Play</b>	Number: <b>Unlimited</b>	
Age Restrictions:	<b>All Players Must Be Over 35 Years Of Age</b> (Teams are permitted (2) players under 33 years)	
Report Score to:	<b>Report within 24 hours</b>	
Keep Written Record of Goal Scorers:	<b>Yes, report all scorers on Central Assign</b>	

<b>CSSA State Cup “MEN” – Over 30 + Over 40 + Over 50</b>		<a href="http://www.cssasoccer.com">www.cssasoccer.com</a>
<i>note: age group information must be stated in all reports</i>		
Fees:	<b>\$85/55</b>	<b>Away Team pays the Referee – Home Team pays the Assistant Referees</b>
Grace Period:	<b>15 Min Either Team</b>	Duration of Match: <b>90 minutes</b>
Group Stage play only:	<b>Draw/Tied matches are permitted</b>	
Knock-out rounds only –	<b>FIFA Extra Time rules apply if needed to determine a winner: (2) full 15 Minute Halves, if still tied proceed to Penalty Kicks</b>	
Subs:	<b>FIFA – Any Stoppage In Play</b>	Number: <b>Unlimited</b>
<b>O–30 Age Restrictions: All Players Must Be 30 Years or Older, except Goal Keeper</b>		
<b>O–30 Keeper: Must Be 25 Years or Older</b>		
<b>O–40 Age Restrictions: All Players Must Be 40 Years or Older, except Goal Keeper</b>		
<b>O–40 Keeper: Must Be 35 Years or Older</b>		
<b>O–50 Age Restrictions: All Players Must Be 50 Years or Older, except Goal Keeper</b>		
<b>O–50 Keeper: Must Be 45 Years or Older</b>		
<b><u>Underage Goal Keepers are not allowed as field players</u></b>		
Official Match Report:	<b><i>The “Official” Match Report must be entered in Central Assign within 24 hours of Kick-Off – failure to comply will likely eliminate officials from further Cup assignments</i></b>	
Rosters/Checked In Players:	<b><i>Checked-in Rosters MUST BE RETURNED TO CSSA to ensure players are legal. Failure to return rosters will likely eliminate officials from further Cup assignments</i></b>	
Keep Written Record of Goal Scorers: <b><u>Required</u></b>		

The following are **MANDATORY** requirements to start a CSSA Cup match and only in extraordinary situations and with CSSA approval will these requirements be altered for a CSSA Cup match:

- **Do not Kick Off any CSSA Cup match without pre-printed “Official CSSA Cup Rosters” rosters that are stamped/signed by the CSSA Cup Chairman or contain a CSSA watermark/background (absolutely no write-in of player names)**
- **Rosters must have full names and ID numbers; including coaches if they are not checked in as a player (no handwritten data except for jersey/shirt numbers allowed)**
- **Player jersey/shirt numbers must be recorded on the rosters at player check-in**
- **Players must present a valid CSSA or USASA player pass during the check-in process (no pass = no play), unless their league uses valid “picture rosters such as SNEASL or a designated other form of picture ID, explicitly communicated by the CSSA (CDL, passport, etc.)**
- **CSSA CUP Final matches will be paid by CSSA, all other match Referee fees will be paid by the teams (4<sup>th</sup> officials for Finals will be paid either by CSRP or CSSA)**

<b><u>ALL Match Rosters from CSSA State Cup Games are to be sent by e-mail not later than 48 hours after the kickoff (copy both recipients)</u></b>	<b><u>Player Passes for all Red Cards given in CSSA State Cup Games are to be sent by mail to:</u></b>  <b>(this is for CSSA Cup only)</b>
<b>Julia Connor: <a href="mailto:jul.conn.6@gmail.com">jul.conn.6@gmail.com</a></b> <b>and</b> <b>Dan Rooney: <a href="mailto:danrooney2009@gmail.com">danrooney2009@gmail.com</a></b>	<b>Dan Rooney</b> <b>60 Trinity Avenue</b> <b>Glastonbury, CT 06033-1336</b>

<b>Super Y–League Under–20 ( USL ) (<a href="http://supery.uslsoccer.com">http://supery.uslsoccer.com</a>)</b>		
Fees: <b>\$55/35</b>	Grace Period: <b>1 hour</b>	Duration of Match: <b>90 minutes</b>
Subs: <b>FIFA – Any Stoppage In Play</b>	Number: <b>7</b>	
A player may be substituted once in the first half. Once the player has been substituted, they may not re-enter the match until the second half. Once a player is substituted in the second half, they may not re-enter the match during the rest of regulation play.		
Age Restrictions: <b>Under–20</b>		
Report Score to: <ul style="list-style-type: none"> <li>• <b>Report within 24 hours</b></li> <li>• <b>Fax or e-mail report to Super Y–League Office within 48 hours</b></li> </ul>		
Keep Written Record of Goal Scorers: <b>Yes, Required --- Record All Goal Scorers</b>		

<b>WPSL – Women’s Premier Soccer League (<a href="http://www.wpsl.info">www.wpsl.info</a>)</b>		
Fees: <b>\$75/50/35</b>	Grace Period: <b>none</b>	Duration of Match: <b>90 minutes</b>
Subs: <b>FIFA – Any Stoppage In Play</b>	Number: <b>Unlimited</b>	
Age Restrictions: <b>none</b>	Roster Size:	<b>20 players maximum</b>
Report Score to: <ul style="list-style-type: none"> <li>• <b>Send report to the WPSL within 24 hours – fax 800-854-0913</b></li> </ul>		
Keep Written Record of Goal Scorers: <b>Yes, Required --- Record All Goal Scorers on WPSL Referee Report</b>		

<b>National Cup – Open/Amateur Cup</b>	
Fees: <b>TBA</b> (for more information contact CSSA)	
Grace Period: <b>15 Min Either Team</b>	
Duration of Match: <b>90 minutes + (2) 15 Minute OT Halves + Kicks from the Mark</b>	
Subs: <b>FIFA – Any Stoppage In Play</b>	Number: <b>7 Players With No Re-entry</b>
Age Restrictions: <b>None</b>	
Report Score to: <b>Send Written Referee Report and Player Passes for Send Offs to Region 1 National Cup Commissioner</b> (Report on-line within 24 hours if assignment is posted)	
Keep Written Record of Goal Scorers: <b>Yes – Submit on Written Report to Region 1 + on-line</b>	
Note: <b>Any additional information needed will be provided with game assignment</b>	

<b>National Cup – Over 30</b>	
Fees: <b>TBA</b> (for more information contact CSSA)	
Grace Period: <b>15 Min Either Team</b>	
Duration of Match: <b>90 minutes + (2) 15 Minute OT Halves + Kicks from the Mark</b>	
Subs: <b>FIFA – Any Stoppage In Play</b>	Number: <b>7 Players With No Re-entry</b>
Age Restrictions: <b>All Players Over 30 Years of Age As Of Date Played</b>	
Report Score to: <b>Send Written Referee Report and Player Passes for Send Offs to Region 1 National Cup Commissioner</b> (Report on-line within 24 hours if assignment is posted)	
Keep Written Record of Goal Scorers: <b>Yes -- Submit on Written Report to Region 1 + on-line</b>	
Note: <b>Any additional information needed will be provided with game assignment</b>	



# Directory of League Contacts:

*(Send lineups and player pass(s) to the appropriate League Representative if a Red Card(s) is given in a game)*

<b>ASLC</b>
Raphael Rezende
149 Myrtle Ave, Apt 3
Stamford, Ct 06902
aslconn@gmail.com
203-496-1022

<b>ASLC – Red Cards given</b>
<b>send passes to:</b>
Raphael Rezende
149 Myrtle Ave, Apt 3
Stamford, Ct 06902

<b>CASL (was CARSL)</b>
Chad Odefey
95 Chapel St.
Stratford CT 06614
codefey@gmail.com
203-543-6488 (c)

<b>CSL</b>
Jack Testani
37 East Gate Lane
Hamden, CT 06514
torrice6@aol.com
203-232-2049 (C)

<b>CSSA State Cup Administrator</b>
Julia Connor
jul.conn.6@gmail.com
860-989-3762

<b>CWSSL</b>
Gary Horan
gary.horan@faa.gov
781-238-7164

<b>ECWSC</b>
Lanaya Sandberg
lanayasandberg@aol.com
860-331-6096 (C)

<b>FVASC</b>
Bill Bitterli
wdb@NORTHINGTON.NET
79 Highridge Rd
W. Simsbury CT 06092
860-559-3194 (H)

<b>NWSL</b>
Jennifer Lynch
jl6044@aol.com
203-687-7253 (cell)

<b>SASL</b>
Andy Aldo
45 Pine Brook Ct
Cheshire, CT 06410
aaldosoc@aol.com
fax 203-271-9154

<b>SCWSL</b>
Jen Larson
54 Greenwood Avenue apt1
Bethel, CT 06801
littlekid1223@msn.com

<b>SNEASL</b>
Andrew Lindsay
163 Park Ave
Windsor, CT 06095
sodrew@comcast.net
860-655-3548

<b>Stamford Coed</b>
Sandra Hampson
sandra7h@aol.com

<b>U-23</b>
Al Bell
18 Fox Road
Plainville, CT 06062
mrsoccer@comcast.net
860-306-6822

<b>WHWSC</b>
Abby Wrinn
860-874-7624
AWrinn19@aol.com

<b>WSL</b>
Jose Sandoval
sagoenvia@yahoo.com
860-670-2955

<b>Super Y–League</b>
Jesus Zornoza
local assignor/contact
860-539-4435
zornoza@snet.net

<b>WPSL</b>
Jesus Zornoza
local assignor/contact
860-539-4435
zornoza@snet.net


<b>USASA Region I - National Cup</b>
John Kahmke, commissioner
786 Flynn Road
Rochester, NY 14612
jkahmke@localnet.com
<a href="http://www.usasa.com">www.usasa.com</a>

# Directory of State Administrators:

CSRP Office
CSRP
705 North Mountain Rd
Newington, CT 06111
info@ctreferee.net
860-919-0850

SRA
Jesus Zornoza
123 Oscaleta Dr.
Ridgefield, Ct 06877
sra@ctreferee.net
860-539-4435 (C)

SDA
Stan Kupinski
ct-sda@ctreferee.net
203-442-3290 (C)

SDI
John Collins
34 Langstroth Drive
Ridgefield, CT 06877
ct-sdi@ctreferee.net
203-512-0560 (C)

CSSA Discipline
Ken Brown
10 DaCosta Drive
Newington, CT 06111
ken.t@cox.net
860-667-3359

**Ejected Player  
Passes MUST be  
sent to the  
Competition  
Representative**

**Do not send anything to the CSSA  
Discipline Committee, they will  
review Game Reports on-line!!!**

**Use the areas on Central Assign for the  
“Supplementary Referee and AR Reports”  
to document Send Offs, Injuries & any other  
unusual circumstances.**

**All Referees and AR’s must provide specific  
details about player ejection(s), injury(s),  
game termination & any other unusual  
circumstances.**

CSSA President
Dan Rooney
60 Trinity Avenue
Glastonbury, CT 06033
danrooney2009@gmail.com

[www.cssasoccer.com](http://www.cssasoccer.com)

# Referee Assignors:

<b>SASL, CWSSL FVASC, ECWSC</b>
Joe Maimone
joe.maimone@cox.net
860-836-7641 (C)

<b>CSSA State Cup O-30, O-40, O50</b>
Matt Mercier
matt.mercier81@gmail.com
860-306-3752

<b>ASLC</b>
Stan Kupinski
ctassignor@optonline.net
203-442-3290 (C)

<b>CASL</b> (was CARSL)
Desmond Johnson
desmondaj64@gmail.com
203-247-3783 (C)

<b>CSL</b>
John Collins
203-512-0560 (C)

<b>FSA Summer Leagues</b>
Joe Maimone
joe.maimone@cox.net
860-836-7641 (C)

<b>NWSL</b>
John Collins
203-512-0560 (C)

<b>SCWSL</b>
Stan Kupinski
ctassignor@optonline.net
203-442-3290 (C)

<b>SNEASL</b>
Matt Mercier
matt.mercier81@gmail.com
860-306-3752 (C)

<b>Stamford Coed League</b>
John Collins
203-512-0560 (C)

<b>WHWSC</b>
Matt Mercier
matt.mercier81@gmail.com
860-306-3752 (C)

<b>WSL</b>
Jose Sandoval
860-670-2955




<b>Super Y-League, WPSL</b>
Jesus Zornoza
local assignor/contact
860-539-4435 (C)
zornoza@snet.net